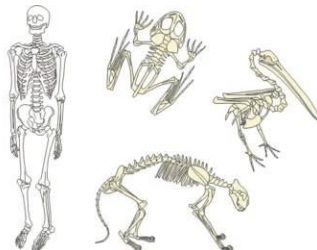


Year 3

Guide To

Summer Term 2 2017



Our curriculum at Summerlea is creative and designed to forge links between the different areas of learning. Each topic we study is led by a driving question to get us thinking. We have listed the **main** curriculum areas that will be addressed by each question and have given a brief outline of what we will be learning.

This half term we will be continuing our question...

“How does your garden grow?”

Science: We will be looking at the skeleton and muscles of a variety of animals linked to our book the ‘Tin Forest’, researching what they need to survive, how they move and what they eat.

English: Continuing descriptive writing based on our key text the ‘Tin Forest’ - focussing on how our choices of verb and prepositions will create detailed pictures in our reader’s minds.

ICT: We are creating surveys based on what the children eat during the school day and also creating films using iMovie.

Geography: Linking to our key text, we will be looking at the different types of forest in North and South America and Europe - how they differ in climate and vegetation, and why.

Art: We will be studying the work of Georgia O’Keeffe and how she depicts and creates images of flowers and plants. During our Forest School day, we will be combining natural and man-made items to create new pieces of artwork in her style.

***This half term we will also be developing both our musical skills by singing.
We will be playing striking and fielding sports, and preparing for Sports
Day!***

Maths:

Our main objectives are to:

Understand place value in 3-digit numbers, order and find a number in between 2 given numbers; round 3-digit numbers to the nearest ten and to the nearest hundred

Solve additions and subtractions using place value

Multiply and divide by 10; count in steps of 10, 50 and 100.

Add pairs of 2-digit numbers using partitioning and then extend to add two 3-digit numbers

Recognise and sort multiples of 2, 3, 4, 5, and 10;

Double the 4 times-table to find the 8 times-table; derive division facts for the 8 times-table; multiply and divide by 4 by doubling or halving twice.

Name and list simple properties of 2D shapes; begin to understand and use the term perimeter to mean the length/distance around the edge of a 2D shape; begin to calculate using a ruler.

Add and subtract pounds and pence from and to five and ten pounds; use counting up as a strategy to perform mental subtraction of amounts of money.

Measure, compare, add and subtract: lengths (m/cm/mm); mass (kg/g); volume/capacity (L/ml).

Estimate and read time with increasing accuracy to the nearest minute; record and compare time in terms of seconds, minutes and hours; use vocabulary such as o'clock, am/pm, morning, afternoon, noon and midnight.

Tell and write the time from 12-hour and 24-hour clocks.

Any help at home with learning number facts, times-tables and telling the time would be beneficial!

Talk to your child's class teacher for ways to help.

Year 3 news and information

The team:

Mrs Kerrison (Beech Class Teacher)

Ms Gerring (Beech Class Teacher)

Miss Gunn (Chestnut Class Teacher)

Mrs Refoy (Elm Class Teacher)

Mrs Palmer (Teaching Assistant)

Mrs King (Teaching Assistant)

Mrs Corley-Black (Teaching Assistant)

Special Days:

Forest School

Sports Day – Wednesday 21st June (Reserve date: Friday 23rd June)

Innovators and Inventions Fortnight – 3rd-14th July

Library day: *Monday*

PE Days:

Wednesday and Friday. Both sessions will be outside

Reading: *Your child will read in a guided reading group once a week and read to an adult at least once a fortnight, however, we will not always write in their reading diaries. Also, they are given the opportunity to change their book, independently, once a week.*

Homework:

Spellings: *We will send spellings home every week on a Friday.*

Maths: *set on a Thursday, due in the following Monday*

Coats/snacks/drinks and equipment:

Please ensure your child has appropriate clothing for our variable summer weather as we aim to go outdoors in all weathers for both learning and break times. A light waterproof coat with a hood is recommended, as well as a sun hat and sun cream.

Helpers:

We are always looking for any help with reading or with art projects so please come and speak with your child's class-teacher if you can offer any help or support.