

# Year 1

Guide to

Summer Term 1

2019





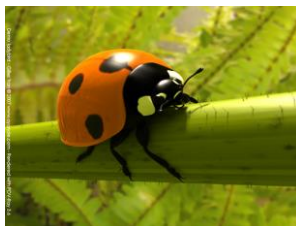
Our curriculum at Summerlea is creative and designed to forge links between the different areas of learning. Each topic we study is led by a big question to get us thinking. We have listed the **main** curriculum areas that will be addressed through each question and have given a brief outline of what we will be learning.

This half term our driving question is...

***Minibeasts:***

***Friend or Foe? How do you know?***

The Key Drivers for this term are **English and Science**. We are going to be learning all about minibeasts and plants. We are very excited that this half term we will be experiencing Forest School for the first time! We will be researching minibeasts and plants in our 'Minibeast Investigation Lab' role-play area and also writing some poems.



**English:** We will be teaching reading, writing and editing skills through our poetry writing. We will be exploring different types of poems using our key text 'Mad About Minibeasts'. Types of word play, such as alliteration, are also on the agenda!

**Geography:** We will continue to think about the seasons and will be looking at the changes that late spring and early summer brings. This will tie in well with our Forest School work.

**Science:** We will be investigating Minibeasts, looking at their habitats and their anatomy. When researching plants, our learning will involve looking at the different parts of a plant and their function. We will also be looking at different plants and comparing them to each other. Through our learning, we will be answering our question 'Friend or Foe? How do you know?'

**DT:** We will be experimenting with the medium of clay in order to design and create our own clay minibeast. In addition, we will also be learning the skill of tile printing to create a pattern inspired by nature.

**PE:** This half term we are practising balancing skills on and off apparatus. In outdoor P.E. we will be developing our sending and receiving skills using a variety of equipment.



## Mathematics:

Our main objectives are to:

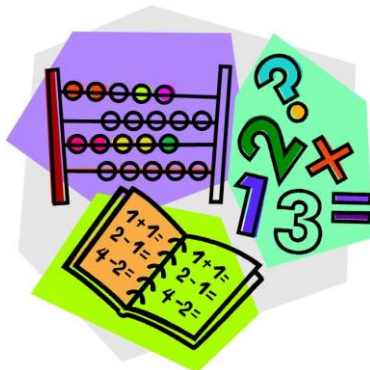
### Multiplication and Division:

- count in 10s
- make equal groups
- add equal groups
- make arrays
- make doubles
- grouping and sharing

### Fractions:

- halving shapes or objects
- halving a quantity
- find a quarter of a shape or object
- find a quarter of a quantity

Don't forget to attend our brand new parent pre-teach session to get even more information on our maths coverage!



# Year 1 information

## The team:

*Mrs Crook – Key Stage 1 Phase Leader*

*Mrs Robins – Ash class teacher*

*Mrs Crook and Mrs Welton – Holly class teachers*

*Mrs Edwards, Mrs Pankhurst and Miss Short – Teaching Assistants*

*Mrs Gingell and Mrs Dale – Individual Needs Assistants*

*Mrs Moynihan and Mrs Burge – PPA cover*



## Exciting days, trips and visitors:

*Forest School - Every Tuesday*

*Y1 Outdoor Poetry Celebration - Date TBC*

*Maths pre-teach for parents - 01.05.19 at 2:30pm in Ash Class*

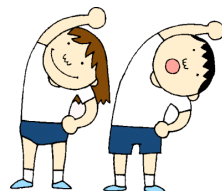
## Library day:

Both classes – Monday

## PE Days:

Indoor - Thursday

Outdoor – Wednesday



**Coats/snacks/drinks and equipment:** *Please ensure that your child brings in a named, filled bottle of water to school every day. Please also make sure that your child has **tracksuit bottoms and trainers** in their P.E. bag and that every item of clothing is named. We ask that your child has their PE kit in school every day as there may be unforeseen timetable changes or additional activities planned. Please ensure this comes straight back into school if they take it home after a sports club.*

***Please don't hesitate to get in touch with your child's class teacher if you have any questions or concerns; our doors are always open.***

## Preview/review

At the beginning of each half term we like to invite your child to reflect on previous learning and look forward to new learning.

*Last half term our big question was:*

*Fairy tales: Where is happily ever after?*

*What have you learnt so far?*

*This half term our big question is:*

*Minibeasts: Friend or Foe? How do you know?*

*What do you already know about minibeasts?*

