



 **Be KIND**
Sejes Gentile

 **Be SAFE**
Sejes Prudente

 **Be READY**
Sejes Pronto



Year 1

Guide to

Autumn Term 2

2023





2022

Our curriculum at Summerlea is creative and designed to forge links between the different areas of learning. Each topic we study is led by a driving question to get us thinking. We have listed the main curriculum areas that will be addressed through each question and have given a brief outline of what we will be learning.

This half term our big question will be...

Nocturnal Animals:

What can the owls see?



The key driver for this topic is **Science**.

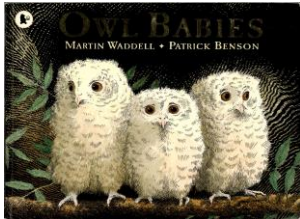
Our half term is inspired by the fantastic story 'Owl Babies' written by Martin Waddell and throughout the subsequent weeks we will be embarking on an amazing journey where we will discover all about owls and other nocturnal animals.

Our key Science vocabulary for this topic:

fish, amphibians, reptiles, birds, mammals,
carnivores, herbivores and omnivores

Science: We will be identifying and naming a variety of common animals, including fish, amphibians, reptiles, birds and mammals. We will also identify and name carnivores, herbivores and omnivores.

History: We will be developing our awareness of the past and finding out about the lives of significant individuals (Guy Fawkes). We will look at ways in which we find out about the past and identify different ways it is represented.



English: We will be teaching reading, writing and editing skills through our key text entitled, 'Owl Babies'. The children will be exploring creative writing including descriptive sentences, exploring the feelings of key characters and rewriting parts of the story. We will also be finding out about owls and will use this information to write facts for information books. Our spelling focus will continue as before, with children bringing home spellings to practise each week.

Art: We will study the work of artist and illustrator Matt Sewell. We will be exploring mark making using a range of materials. We will also be making large- and small-scale drawings of owls, using view-finders to help focus on an area. We will look at images of owls from different angles, work from memory and imagination using line to create patterns and textures and work on different papers.

RSHCE: We will be learning about citizenship this half-term. The children will be learning about the importance of rules and how they can care for others and identify the needs of others. We will also be identifying similarities and differences between ourselves and others. Finally, we will be meeting with KS2 representatives of the school pupil

council.

Mathematics:

Our main objectives are to:

- Explain that items can be compared using: length and height; weight/mass and volume/capacity.
- Use equality and inequality symbols to compare sets of objects.
- Explain that a whole can represent a group of objects and can be split into parts, identify a part of a whole group and explain what a part-whole model is.
- Use a part-whole model to represent a whole partitioned into two or more parts.
- Explain that ordinal numbers show a position and not a set of objects.
- Partition the numbers one to five in a systematic way.
- Find a missing part when one part and the whole is known.
- Show one more and one less than a number using representations and use a bar model to represent a whole partitioned into two parts.

Remember to log on regularly to Numbots to practice your recall and fluency in mental addition and subtraction.



Year 1 information



The team:

Key Stage One Phase Leader: Mrs Crook

Oak Class Teachers: Mrs Levantine (Mon-Wed) and Ms Gerring (Thurs-Fri)

Holly Class Teacher: Miss Chapman and Ms Gerring (Wed)

Teaching Assistants: Mrs Hodges, Mrs Hills, Miss Kennedy and Mrs Crawford

Midday Meal Supervisors: Miss Mangan and Mrs Butcher

Cover Supervisors: Mrs Moynihan and Miss Carter

Exciting days, trips and visitors:

Friday 4th November - Numbots Day

Tuesday 7th November – Hedgehog visit

Monday 13th November – Flu vaccinations

Week beginning 13th November – Anti-Bullying Week

Tuesday 14th November – Individual photographs

Friday 17th November – Children in Need Day

Wednesday 22nd November – Owls About Town visit

Friday 8th December – Chartwells' Christmas Lunch & Christmas jumper day

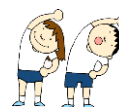
Monday 11th and Wednesday 13th December – Celebration of Learning 2.45pm-3.15pm

Thursday 14th December – Cowbell assembly

PE Days:

Mondays/Wednesdays: Outdoor PE (Oak) Indoor (Holly)

Thursdays/Fridays: Indoor PE (Oak) Outdoor (Holly)



NB: We ask that your child brings their PE kit to school with them, please ensure that all clothing items are labelled. Long hair should be tied back and earring removed or covered.

Library: *Monday*

Coats/snacks/drinks and equipment:

Children should only bring essential items to school. Please ensure your child has a named waterproof coat in school every day as we will still go out in light rain.

We ask that every child has a named water bottle in school. Children in EYFS and KS1 have access to free fruit at breaktimes, however, if you are providing a healthy snack for breaktime, that this is separate from their lunch and put into the classroom box as they come in, in the morning. *We do ask that all snacks are nut*

free due to allergies. We kindly request that no fidget toys are brought in from home, unless agreed with your child's class teacher or The Inclusion Team.

Please don't hesitate to get in touch with your child's class teacher if you have any questions or concerns; our doors are always open.

Preview/review

At the beginning of each half term we like to invite your child to reflect on previous learning and look forward to new learning.

Last half term your big question was:

Who can be a superhero?

What did you learn?



This half term our big question is:


What can the owls see?

What do you already know about nocturnal animals?

The Summerlea Seven


H ONESTY E QUALITY A SPIRATION R ESPECT R ESILIENCE R ESPONSIBILITY T RUST

Personal Learning and Thinking Skills (PLTS)



I Am An Effective Participator

- I listen to and value the ideas and suggestions of my classmates.
- I contribute to and take part in class discussions.
- I am keen to share my work with my teacher and my class.
- I put up my hand and answer questions.
- I am good at thinking logically and breaking problems into manageable chunks.
- I can make a persuasive but open-minded argument.
- I take part in a range of activities in my community beyond school.



I Am A Creative Thinker

- I can imagine new ideas.
- I question things that we often take for granted.
- I am not afraid to try out alternative ideas or do new things. I will work outside of my comfort zone and see things through.
- I can think of innovative and exciting ways to improve my work.
- I can make connections and links between ideas.



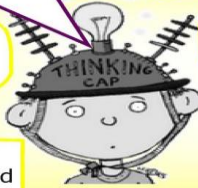
I Am A Reflective Learner?

- I enjoy sharing my learning with others.
- I can identify ways to improve my own and other's work.
- I can deal positively with praise, constructive criticism and set backs.
- I can communicate my learning in different ways.
- I can set positive challenges to help me achieve my goals.
- I can plan a project using SMART targets, learning diaries and review points to keep me on track.

I Am An Independent Enquirer

I can plan and carry out a research project.

I can explain the decisions I make and discuss or present their possible consequences.



I can identify questions to answer and problems to resolve.

I can analyse and evaluate information from a range of sources.

I can explore ideas from different points of view.

I can select the most relevant or valuable ideas to use in my own work.

I recognise and value the strengths of everyone in my team.

I can manage a team effectively to complete a project

I can recognise the efforts and achievements of others and praise them.



I Am An Effective Team Worker

I can discuss things, make compromises and agree with my classmates about how best to achieve a task.

I can take on different team roles and accept responsibility for seeing them through.

I always complete my work and hand it in on time.

I can show Initiative and Perseverance. I see a task through to its end.

I can take and manage risks.

I Am An Effective Self Manager.



I can manage my own emotions.

I can organise my time and resources I need.

I think about problems and search for solutions before asking for help.

I can prioritise what needs to be done during a task.

What badge will you go for this half term?