



WEST SUSSEX COUNTY COUNCIL

# SUMMERLEA C.P. SCHOOL



WINDSOR DRIVE, RUSTINGTON

WEST SUSSEX, BN16 3SW

HEADTEACHER: MRS H MORRIS

TEL: (01903) 856783

FAX: (01903) 856784

E MAIL: [office@summerleaschool.co.uk](mailto:office@summerleaschool.co.uk)

*'Growing thoughtful learners and independent thinkers'*



*Honesty, Equality, Aspiration, Respect, Resilience, Responsibility, Trust*

## NEWSLETTER 14: 18 April 2016

**Year 4 are away on their residential visit to Marchants Hill this week.  
We wish them a brilliant adventure and look forward to their return!**

### School Angel – Easy School Fundraising



We are delighted that after only having joined School Angel a few weeks ago £37.00 has already been raised!

You will have seen from previous communication that we have recently registered with School Angel – a charity that will help us raise money for our school through online shopping. School Angel is really easy to use and our school has its own charity page already set up which you can visit using this link:

<http://www.schoolangel.org.uk/summerlea-community-primary-school.html>

You can also visit via our own school website, where we have set up an icon called 'School Angel' which can be found under:

Our School > Fundraising > School Angel. So, next time you want to do some online shopping please do so via School Angel. Thank you for your support!



### Week beginning 18<sup>th</sup> April:

**Mon 18<sup>th</sup>:** Year 4 to Marchants Hill (Mon to Wed)

Year R to Gaston Farm

Year 3 swimming

NO CLUBS THIS WEEK (apart from Glee)

### Week beginning 25<sup>th</sup> April:

**Mon 25<sup>th</sup>:** Year 4 swimming starts

Clubs begin this week

Book Fair in school (Mon to Thurs)

**Tues 26<sup>th</sup>:** 2.45pm Used uniform sale

**Thur 28<sup>th</sup>:** 7pm Summer Spectacular at the Windmill Theatre

**Fri 29<sup>th</sup>:** Class photos

7pm Summer Spectacular at the Windmill Theatre

***Please also see the attached term dates for the academic year and key events on our website calendar, as well as separate letters for more information.***



Networked Learning Communities





### Trading Games

You will remember from the last newsletter that Match Attax cards are now no longer allowed in school.

The concept of swapping is one lots of children struggle to fully understand and this can lead to all sorts of conflict and upset.

In the interest of fairness and with it being the summer term and hopefully some finer weather on its way (!) we would like children to keep all swapping cards and toys at home please. Some children have recently started bringing in Shopkins (small swapping figures). Thank you for your support with helping us to ensure playtimes are happy.



### Compass Card

West Sussex have teamed up with local charity, Amaze, to deliver Compass Card West Sussex. This is a free card that provides special leisure deals at dozens of venues in the local area for young people under 25 who have special educational needs and disabilities. The card, launched earlier this month, already has 50 offers available and there will also be specific discounts and time-limited offers of which the cardholder can take advantage of. If you are interested please visit this link to find out more:

<http://www.westsussex.gov.uk/campaigns/compass-card-west-sussex>

### Parent Surveys

Thank you to everyone who took the time to complete the short questionnaire distributed by our governors during parent consultation week last term. We are in the process of collating the responses and will use these to help us to reflect on what we do well and what we can do even better. We really value your feedback. Please remember you can also give us your views via ParentView and you need to do this every academic year. Thank you.



### Reminders about school drop off and pick up

Please remember that our gates open at 8.15am each morning and children should not be on site earlier than this, unless they are attending a before school club. From 8.20am a teacher is on duty on both playgrounds. Please note if your child is in Upper Key Stage 2 and comes to school on their own they will be unsupervised until this time.

If you are picking up your child early from school for any reason then please ensure you collect them via the main office so that we can sign them out.

Either myself, Mrs Strong or Mr Trahern are usually on the main gates in the morning and if you should have a question or concern please do not hesitate to speak to us, or a member of the office staff; we are always happy to help.



### Parking Promise

Our Travel Plan Team are working hard to continue to come up with creative ways to remind and encourage as many members of our community to walk to school or to park safely and legally.

You might remember that a little while ago they devised a Parking Promise (attached) and also asked families to participate in their survey. Please take the time to visit our website to sign up to the promise and answer their questions. It doesn't take long and they need some more responses please.

Please visit <http://www.summerlea.w-sussex.sch.uk> and then Our School > Travel Plan Team. Thank you.

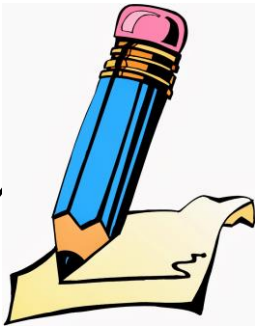


### Maths Calculation Policy

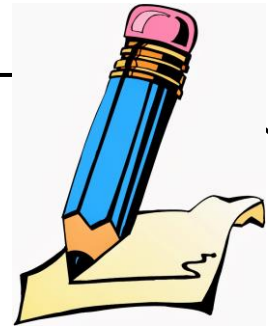
Our calculation policy is now available via our new website. Please visit <http://www.summerlea.w-sussex.sch.uk> and then Our School > Curriculum & Assessment > Maths.

Headteacher:

*Helen Morris*



**The 100-word challenge**  
**Week beginning: 7<sup>th</sup> March**



**EYFS/Key Stage 1 winner**

*Bad news. The cracking egg volcano erupted. "Aaaaaaaah! Let's run away!" Inside the egg was like the gooiest thing in the world. The goo was so big it blew my eyes out! I was staring at it. The egg was mysterious.*

*Written by Matthew (Cedar Class, Year 2)*

***This was the image that inspired lots of egg themed writing in the lead up to Easter last month!***



**Key Stage 2 winner**

Eggs, eggs, eggs

*I love eggs but  
My favourite is crème eggs  
Eggs, eggs  
It's raining eggs  
From out of the sky  
I do not know why!*

*Oom-pah-pah eggs  
Oom-pah-pah eggs*

*I L, L, L, L, L, L  
Like eggs  
It's raining eggs from out of the sky  
Eggs  
I do not know why!*

*Written by Henry (Redwood Class, Year 3)*

**Time to read and reflect**

We hope you have enjoyed reading these pieces of writing. It would be lovely if you could spend some time sharing and discussing them with your child. Below are some suggestions of things you could think and talk about together.

*Matthew has made lots of great word choices. Which are your favourites and why?*

*Henry has written a brilliant song. Can you continue it by making up another verse in the same style?*

## **VACANCIES**

### **Mid Day Meals Supervisors (MDMS)**

**Grade 2 £7.19 - £7.43 per hour**

**5 hours per week, 1 hour daily Monday-Friday**

The successful candidates will be able to engage with children, support and care for them and ensure that their school experience is a positive, safe and happy one.

We encourage our MDMS to have a sense of belonging to an important team of staff. The MDMS are responsible for supervising the children, ensuring that they have a calm and positive lunchtime experience that is sociable and fun.

All MDMS are expected to supervise and engage the children in play on the playground before/after lunch has been eaten and liaise with the staff about pupils' individual needs.

Summerlea School is an equal opportunities employer and the posts are subject to enhanced DBS clearance. We expect all candidates to share a commitment to safeguarding our pupils.

Visits to our school are most welcome.

Please download and complete an application and safer recruitment form and email them to [sbm@summerleaschool.co.uk](mailto:sbm@summerleaschool.co.uk) or post to Summerlea CP School, Windsor Drive, Rustington, West Sussex, BN16 3SW. Enquiries 01903 856783



## Summerlea CP School

### Calendar of School Events

#### **TERM DATES FOR THE ACADEMIC YEAR 2015-16:**

**Autumn term:** Thursday 3<sup>rd</sup> September – Friday 18<sup>th</sup> December

**INSET days:** Thursday 3<sup>rd</sup> and Friday 4<sup>th</sup> September

Half-term: Monday 26<sup>th</sup> October – Friday 30<sup>th</sup> October

**Spring term:** Monday 4<sup>th</sup> January – Thursday 24<sup>th</sup> March

Half-term: Monday 15<sup>th</sup> February – Friday 19<sup>th</sup> February

**INSET days:** Monday 4<sup>th</sup> January and Monday 22<sup>nd</sup> February

**Summer term:** Monday 11<sup>th</sup> April – Friday 22<sup>nd</sup> July

Half-term: Monday 30<sup>th</sup> May to Friday 3<sup>rd</sup> June

**INSET day:** Monday 6<sup>th</sup> June

#### **Summer Term 2016**

*The following dates and events are provided to give you an overview for this term. There are likely to be alterations and additions as we go along and we will notify you of these in the usual way, either by using ParentMail or by sending home a letter.*

<b>April 2016</b>		
Mon	11	Summer term begins
		NO CLUBS THIS WEEK
Tue	12	Year 2 Island Survival Day
		2.45pm Used Uniform Sale in Palm Studio
Wed	13	Year 2 trip to Marwell Zoo
Thur	14	6pm Year 6 SATs and France parent meeting
Mon	18	NO CLUBS THIS WEEK
		Year 4 residential to Marchants Hill (Mon to Wed)
		Year R trip to Gaston Farm
		Year 3 swimming (to make up for missed session)
Mon	25	Book Fair in school Mon-Thurs
		Year 4 swimming starts
		CLUBS START THIS WEEK
Tue	26	2.45pm Used Uniform Sale in Palm Studio
Thur	28	7pm Summer Spectacular at The Windmill Theatre
Fri	29	Class photographs
		7pm Summer Spectacular at The Windmill Theatre
<b>May 2016</b>		
Mon	2	Bank Holiday – school closed
		Year 2 SATs week (1)
Mon	9	Year 6 SATs week
		Year 2 SATs week (2)
	10	Year 5 trip to Woods Mill (more details to follow)
Sat	14	Goblin Kit Car Event at Banjo Road
Mon	16	Walk to School Week
Tue	17	Happy Shoesday – wear shoes that make your feet smile



		2pm Year 4 Assembly to parents
Fri	20	Fundraising evening function for the Year 6 production
Mon	23	Year 6 Residential to France (Mon to Fri)
Tue	24	2.45pm Used uniform sale in Palm Studio
Fri	27	FOSS non-uniform day - £1 donation
		End of half-term
<b>June 2016</b>		
Mon	6	INSET day – school closed
Thur	9	Welcome meeting for new parents
Fri	10	Fundraising Friday and Queen's birthday celebrations (more details to follow)
Mon	13	Key Stage 1 Phonic screening checks (Mon to Fri)
		Year 5 & 6 Top-up swimming
Thur	16	6pm Assessment meeting for parents
Mon	20	National Schools Sports Week – Olympics themed week
		Year 5 & 6 Top-up swimming
Wed	22	Sports Day
Thur	23	School hall being used for polling station – school open as usual but no hot lunches today
Fri	24	Reserve Sports Day
Mon	27	Year 5 & 6 Top-up swimming
Tue	28	2.45pm Used uniform sale in Palm Studio
<b>July 2016</b>		
Fri	1	4.30-7pm FOSS Summer Fair
Mon	4	Year 5 & 6 Top-up swimming
Wed	6	Transition / Change Over Day for whole school
Thur	7	Additional TLA Transition Day
Fri	8	CLUBS FINISH TODAY
Sun	10	Kit Car Racing at Goodwood
Mon	11	Year 6 Production week (Mon to Thur)
		Year 5 & 6 Top-up swimming
Tue	12	2.45pm Used uniform sale in Palm Studio
Fri	15	Annual Reports home today
Mon	18	Optional Parent Consultation Meetings
Tue	19	FOSS Summer Discos
Fri	22	2.00pm Year 6 Leavers' Assembly
		END OF TERM

**TERM DATES FOR THE ACADEMIC YEAR 2016-17:**

**Autumn term:** Monday 5<sup>th</sup> September – Friday 16<sup>th</sup> December

INSET days: Monday 5<sup>th</sup> September and Monday 31<sup>st</sup> October

Half-term: Monday 24<sup>th</sup> October – Friday 28<sup>th</sup> October

**Spring term:** Tuesday 3<sup>rd</sup> January – Friday 7<sup>th</sup> April

INSET days: Tuesday 3<sup>rd</sup> January and Monday 27<sup>th</sup> February

Half-term: Monday 20<sup>th</sup> February – Friday 24<sup>th</sup> February

**Summer term:** Monday 24<sup>th</sup> April – Tuesday 25<sup>th</sup> July

Half-term: Tuesday 30<sup>th</sup> May – Friday 2<sup>nd</sup> June

INSET day: Thursday 4<sup>th</sup> May or Monday 5<sup>th</sup> June (still to be confirmed due to a polling day)

# Music & Curry Night

Join us for a fun-filled evening to help raise vital funds for the Year 6 production of...



## Annie

**ONE  
NIGHT  
ONLY**

For one night only, Mr Fauvel is teaming up with some of the school's music tutors (Joel, Jack and Brett) to play songs from across the decades!

## ...same time as the children's FILM NIGHT!

**Friday 20th May**

**7-10pm**

(Tickets can be purchased from the school office)

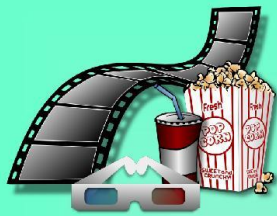
**£10**

per ticket

**Ticket includes a curry  
made by Chef Strong!**

**Bring A Bottle!**





# Film Night



Join Mrs Howard for a fun-packed  
film night in Aspen Class!

POPCORN

SOFT DRINKS

BEAN BAGS!

**Friday 20th May**

**7-10pm**

(Tickets can be purchased from the school office)

**£2**

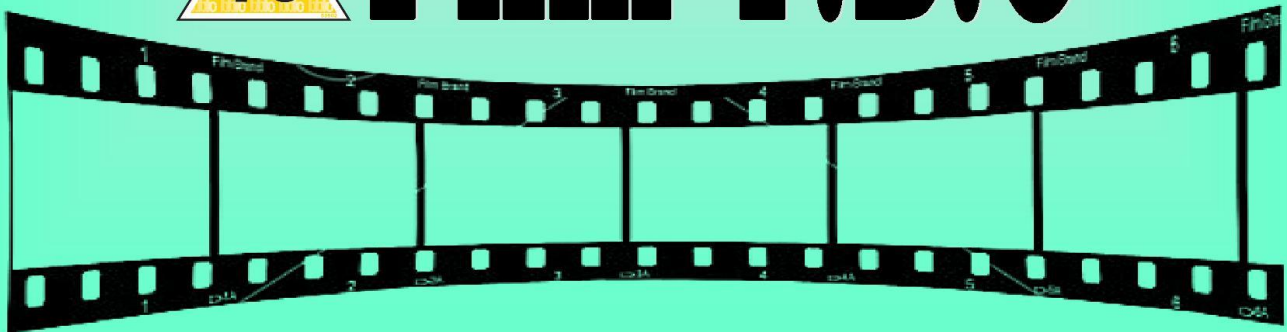
per ticket

or £1 if an adult is  
attending the Music  
& Curry Night

**...same time as the adult's Music & Curry Night!**



# Film T.B.C





I have agreed to support the Summerlea Travel Plan Team by:

- Parking with consideration in a responsible manner
- Travelling to and from school by car, only when necessary
- Not parking in the school car park or turning in the entrance so that I ensure the safety of all pupils
- Ensuring that cars are not double parked or blocking local resident driveways. That cars are not parked on double yellow lines or zigzags and that pavement or verges are kept clear of vehicles



I have read and understood the Parking Promise:

Signed:

Date:



# **CYCLING INSTRUCTORS**



## **URGENTLY WANTED**

**Are you a keen and enthusiastic cyclist?**

**Would you like to share your passion for cycling?**

**West Sussex County Council is currently recruiting motivated individuals to help deliver Bikeability cycle training to children and adults in the Chichester, Bognor Regis and Mid Sussex areas.**

**Full training will be offered to the right candidates.**

**For more information please contact**

**Dean Pocock**

**03302 226709**

**[dean.pocock@westsussex.gov.uk](mailto:dean.pocock@westsussex.gov.uk)**

**or**

**Ed Clark**

**03302228651**

**[edward.clark@westsussex.gov.uk](mailto:edward.clark@westsussex.gov.uk)**