

## Year 6 - Day 2

A message from your teachers . . .

A joke from Mr Anderson:

What do you call cheese that isn't yours? Nacho cheese!

Terrible, I know.

Welcome back year 6! Congratulations for showing such independence, and returning to complete your second day of learning! Look at it this way ; after all this amazing independent learning, secondary school homework will be a breeze!

Don't forget to stay active if you're at home. Joe Wicks is doing a live PE lesson every day on YouTube! We're going to be doing it!

Mr Anderson, Mrs Kerrison and Ms Rozental



**P.E. WITH JOE**  
**Monday - Friday**  
**9am Live on YouTube**  
**The Body Coach TV**  
**#PEwithJOE**

12:49:36  
MILLIONS  
THOUSANDS  
PLACE VALUE!  
Area of a  $\Delta = (b \times h) \div 2$   
Area of a  $\square = b \times h$   
Volume of a  $\square = l \times w \times h$   
156  
27  
109 zones  
3120ms  
4212  
0852  
361 units  
297

f  
t  
p  
e  
c  
+3

# Year 6 - Day 2

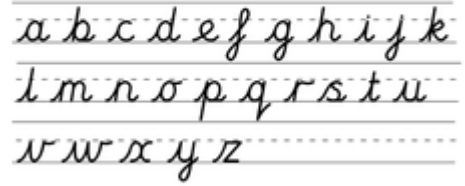
Write the long date and 'Day 2'.

Handwriting :

Sixty zippers were quickly picked  
from the woven jute bag.

Using your line guide, copy this pangram in your neatest writing. A pangram is a sentence that uses all the letters of the alphabet at least once.

## Letter Formation



### Handwriting Top Tips:

- Tall letters and capitals go all the way to the top of the line gap
- All shorter letters should be the same height as each other
- Try to make all upwards strokes (lines) parallel

### Writing Task : Descriptive Writing



Imagine your reader opening a story, written by you, about this haunted house. Your reader won't have any pictures to look at, so your sentences are going to have to paint a clear picture in your reader's mind, otherwise they will lose interest and choose another story to read!

Using yesterday's nouns, draft a paragraph that paints a clear picture for your reader. You can use similes, metaphors, personification, alliteration, and possibly even some short sentences for added impact! Here is an example, which you can magpie from to get started.

I stood, gazing through the towering, rusted gates. A cold mist seemed to be creeping from the house, reaching through the gates like liquid arms snatching at my frozen feet. Above me, bare twisted branches clawed at the sky, casting a spider web of shadows across the moonlit path. As my eye followed the winding path towards the looming house, I noticed a light beckoning behind one of the windows.

**Arithmetic (Doubling):** Copy or stick these questions into your exercise books.

The answers are in red on page 3.

6.  $123 \times 2$

7.  $234 \times 2$

8.  $345 \times 2$

9.  $255 \times 2$

10.  $456 \times 2$

1.  $142 \times 2$

2.  $442 \times 2$

3.  $181 \times 4$

4.  $353 \times 2$

5.  $774 \times 2$

TTRockstars: Log in and complete at least one 'Garage' and one 'Studio' task.

My Maths : Log in and complete today's lesson and homework task.



# Day 2 - Reasoning

1 Write the correct sign  $>$ ,  $<$  or  $=$  in each of the following.



$$(10 + 5) - 9 \quad \square \quad (10 + 9) - 5$$

$$3 \times (4 + 5) \quad \square \quad (3 \times 4) + 5$$

$$(10 \times 4) \div 2 \quad \square \quad 10 \times (4 \div 2)$$

2



Car Park charges	
Time	Charge
up to 1 hour	20p
1 to 2 hours	50p
2 to 3 hours	£1.00
3 to 4 hours	£1.70
over 4 hours	£5.00

Emma parks her car at **9.30 am**.

She collects the car at **1.20 pm**.

How much does she pay?

Dan and Mark both use the car park.

Dan says,

*'I paid exactly twice as much as Mark but I only stayed 10 minutes longer'.*

Explain how Dan could be correct.

Topic Task (Science)

Classification of Mammals



Ask someone to choose one of these dogs, without letting you know which one. Create a set of 'Yes' or 'No' answer questions, which you can ask to find out which dog they are thinking of.

For example: Does it have spots?

Challenge: What is the lowest number of questions you can ask to identify the dog?

## Maths Answers

### Day 2 Arithmetic ANSWERS :

1.  $123 \times 2 = 246$

2.  $234 \times 2 = 468$

3.  $345 \times 2 = 690$

4.  $255 \times 2 = 510$

5.  $456 \times 2 = 912$

6.  $142 \times 2 = 284$

7.  $442 \times 2 = 884$

8.  $181 \times 4 = 362$

9.  $353 \times 2 = 706$

10.  $774 \times 2 = 1,548$

Day 2 Reasoning	1	a) $6 < 14$ b) $27 > 17$ c) $20 = 20$
	2	a) 3h 50 mins so she pays £1.70 b) Mark stayed for 2 hours and Dan stayed for 2 hours and 10 minutes
	3	$18 \times 5 = 90\text{cm}$
	4	0.098, 0.607, 0.78, 4.003, 5.6
	5	20,900, 2,100, 200