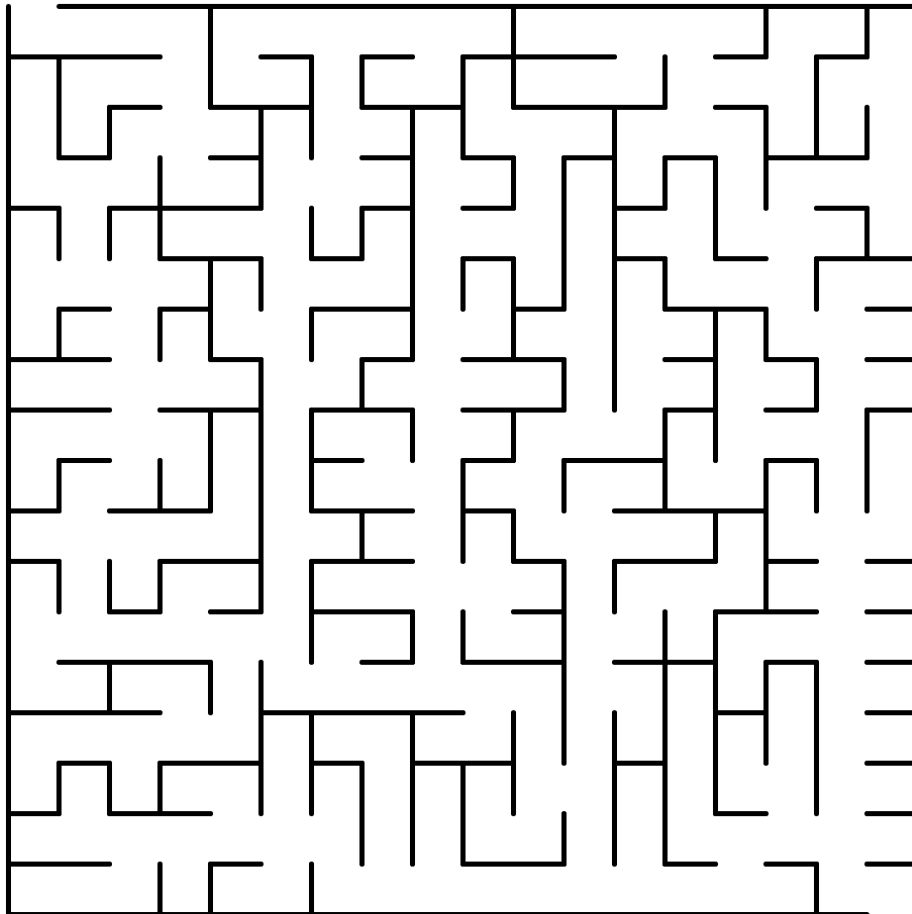


Year 6 - Day 27

Good morning year 6 team!

Let's start by having a go at this maze! Can you find your way through in both directions? This will be a good warm-up for our design challenge today.



Have a great day all!

Mr Anderson, Mrs Kerrison and Ms Rozental

## Year 6 - Day 27

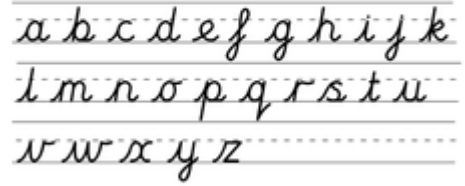
Write the long date and 'Day 27'

Handwriting :

Jelly-like above the high wire, six quaking pachyderms kept the climax of the extravaganza in a dazzling state of flux.

A pangram is a sentence that uses all the letters of the alphabet at least once. Using your line guide, copy this pangram in your neatest writing.

### Letter Formation



Handwriting Top Tips:

- Tall letters and capitals go all the way to the top of the line gap
- All shorter letters should be the same height as each other
- Try to make all upwards strokes (lines) parallel

### English Task : Doors

Today, we are going to plan a portal story! A portal story is where the character or characters travel to another world through a 'portal'. The great thing about portal stories is you can let your imagination run wild to create a whole new world!

Follow the link below, to the Talk 4 Writing booklet on the Summerlea Website. You will then need to scroll down to pages 14 and 15, Activity 9 "Planning a Portal Story."

<https://www.summerlea.w-sussex.sch.uk/attachments/download.asp?file=6900&type=pdf>

Arithmetic: Copy or stick these questions into your exercise books.  
The numbers of the sections may not go in order! Don't worry about this.  
The answers are at the bottom of this document.

### Section 1

What is the value of the digit in the thousands place in the number 806 564?

### Section 3

Calculate:

$$8 \overline{)5248}$$

### Section 4

Use  $<$ ,  $=$ , or  $>$  to compare these fractions.

$$\frac{5}{3} \quad \square \quad \frac{11}{6}$$

$$\frac{9}{8} \quad \square \quad \frac{5}{4}$$

$$\frac{8}{5} \quad \square \quad \frac{16}{10}$$

TTRockstars: Log in and complete at least one 'Garage' and one 'Studio' task.

My Maths : Log in and complete today's lesson and homework task.



## Palindromes

Follow the steps, then repeat. Do you always get the same answer? Can you figure out why?

STEP 1: Think of a three-digit number.

STEP 2: Re-write the number backwards (reverse the digits) to make a second number.

STEP 3: Subtract the smaller number from the larger

STEP 4: Take your answer, and re-write it backwards (reverse the digits).

STEP 5: Add these two numbers together

e.g.           STEP 1:    341

                  STEP 2:    143

                  STEP 3:     $341 - 143 = 198$

                  STEP 4:    891

                  STEP 5:     $891 + 198 = 1089$

Try this 3 or 4 times. Do you always get 1089? If so, why?

### CHALLENGE:

1. Try the steps again, but start with a 2 digit number instead. Repeat, what do you notice?
2. What about with a 4 digit number? Or a 5 digit number?

## Design: Maze-Making

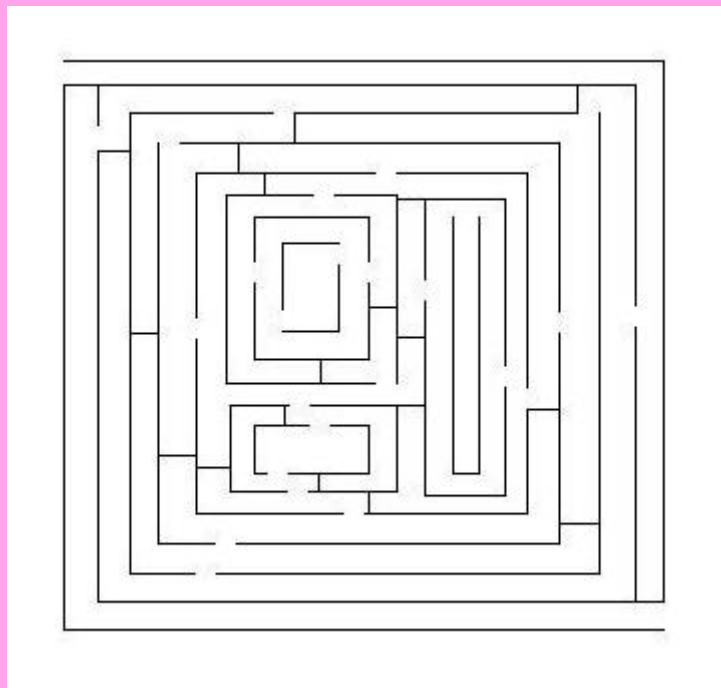
Today, we are going to have a go at drawing a maze! Now this is not as simple as you might first think. Follow the link below for a step-by-step tutorial.

<https://www.instructables.com/id/How-to-Draw-a-Maze/>

Once you have created your maze, add it to Dojo and we will share the for your classmates to try and solve!

### CHALLENGE:

Why not add a theme to your maze? There could be a simple story to set the scene. You could have a character from a book, and an objective. For example, "Help Harry Potter find his way through the maze, to collect the Philosopher's Stone!"



# Maths Answers

## Answers

### Section 1

What is the value of the digit in the thousands place in the number 806 564?

6

### Section 3

Calculate:

$$\begin{array}{r} 656 \\ 8 \overline{)5248} \end{array}$$

### Section 4

Use <, =, or > to compare these fractions.

$$\frac{5}{3} \quad < \quad \frac{11}{6}$$

$$\frac{9}{8} \quad < \quad \frac{5}{4}$$

$$\frac{8}{5} \quad = \quad \frac{16}{10}$$