



Welcome to Summerlea Community Primary School



Leadership Team Introductions



Mrs Helen Morris
Headteacher



Mrs Karla Strong
Deputy Headteacher



Mrs Victoria Galpin
Assistant
Headteacher and KS2
Leader



Mrs Lindsey Robins
Middle Leader



Mrs Louise Crook
KS1 Phase Leader



Mrs Claire Hawkins
EYFS Leader





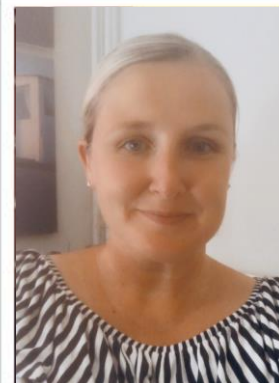
A special time

- We want your child to feel happy, safe and ready to learn
- High quality early learning
- Working in partnership
- Laying the foundations
- Building on good principles and practice
- Fostering a love of life, learning and each other
- Nurturing abilities, gifts, talents and interests





The EYFS Team



Mrs Hawkins / Ms Gerring

Mrs Cowie

Miss Camble

Mrs Boyce

- Mrs Hawkins will be Maple Class teacher four days a week.
- Ms Gerring will be Maple Class teacher one day a week.
- Miss Camble will be Willow Class teacher.
- Mrs Cowie will be the full time Learning Support Assistant primarily based in Maple room.
- Mrs Boyce will be the full time Learning Support Assistant primarily based in Willow room.



Organisation



- Exciting educational experiences and rich learning environments
- Two form entry - cohort of 60 children
- The EYFS team and the two rooms will work closely together and a 'free flow' ethos is encouraged.
- 'Free-flow' means your child will take part in learning activities across both classrooms and the outdoor area, as well as work with a range of adults.
- Any questions or concerns please speak to us or current parents/carers



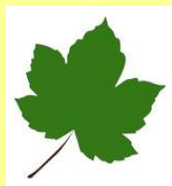
Rooms

- Our classrooms are called Maple and Willow. We also have a large, well equipped outdoor area designated for use by Reception children.
- We are referring to our 'classrooms' as 'rooms' in order to promote the 'free flow' ethos that we believe in. Throughout the day, your child will be working with a range of children and adults from across Early Years.
- Each room has a teacher and full time Learning Support Assistant.
- In addition, Individual Needs Assistants will also support children with Special Educational Needs and an EHCP.

Willow room



Maple room →



Groupings

- We try to group the children to achieve a good balance across the classes, however we reserve the right to re-group the children at the end of EYFS, or later in their school career, if we feel this would be in the best interests of the year group.
- We use the information you have provided us in the 'All About Me' booklets to group the children. We always try to place your child/ children with at least 1 friend.





Life in Early Years...



First Hand



EXPERIENCES

We are really proud of the creative curriculum that we offer our children. We believe first hand experiences are essential and we ensure 'wow' moments are planned in for your child/ children to enjoy.

The structure of our day will look different as the year progresses, with more 'free flow' in the Autumn term building up to more structure by the Summer term. This is all to aid transition. Play is very much at the heart of what we do in EYFS and we can guarantee your child will have lots of fun learning with us!



Snack and lunch time arrangements



We eat lunches in the hall.

Early Years go into the hall first at 11.50am.

We bring a named water bottle in everyday. We are encouraged to drink regularly.

We encourage the children to eat healthy snacks. School snacks are provided for all EYFS and KS1 children.



Learning journals

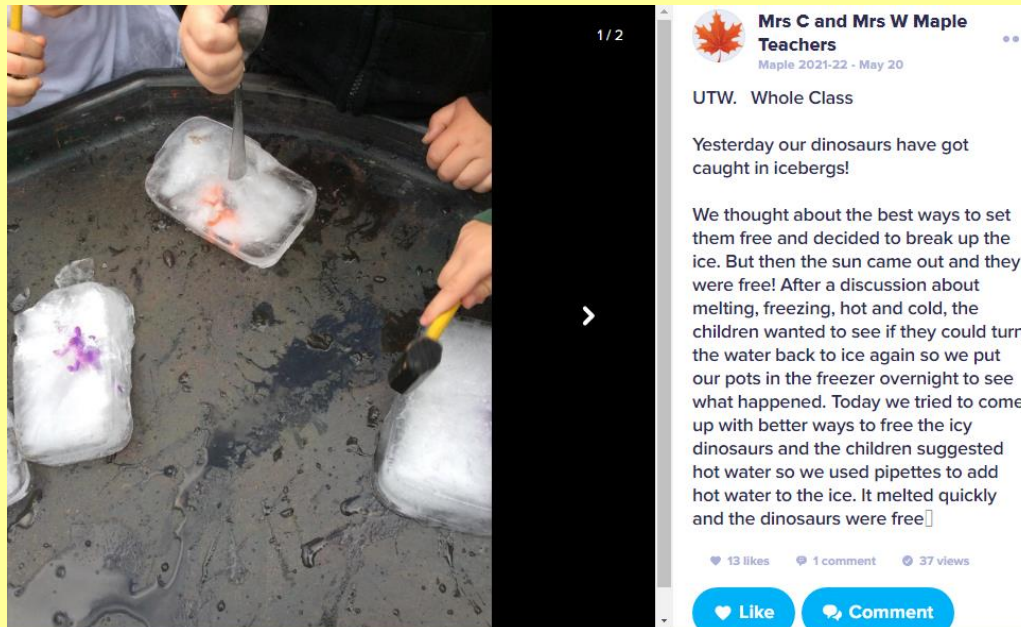


Your child will produce a learning journal that looks like this. It is full of adult directed tasks and 'wow' work. You are invited to come in and view your child's journal regularly throughout the year.



Class Dojo

- Your child will have their very own portfolio set up on an app called 'Class Dojo'. You will receive an invitation to join your child's class within the next couple of months. This will mean you can see observations of your child, comment on them as well as upload your own observations at home.





We love celebrating success!



Celebrating success is something we really value at Summerlea. Here are a few ways we celebrate all of the amazing things that go on in our school:

- Weekly Star Pupil and Value certificates- These are handed out in class for the first term of EYFS. Once we start joining whole school assemblies in the Spring they will be given out there!
- Class rewards- This is where we earn Class Dojo points as a class for working towards a target. We then enjoy a treat as a class! The treat is decided by the children!
- Desk award- This is where one child per class is nominated by the teacher to win a special desk to sit on in class for a week! The children love winning the desk!



Communication with parents

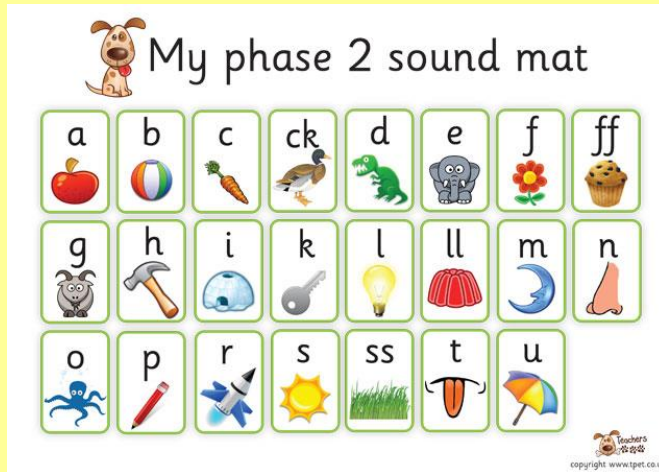


We believe effective communication with parents and carers is essential to the success of your child's experience at school. That is why we have many procedures to support this:

- A noticeboard outside Maple class which updates you with things that are happening in the week or key events. We also post regular updates on Class Dojo too.
- We have an open door policy and encourage you to come and talk to us either at the start or the end of the school day if you have any questions.
- Opportunities to contribute to your child's learning journal through home learning activities and Class Dojo observations.
 - Regular opportunities to come in for parent workshops, parent consultation meetings and celebration of learning events where you can look at your child's learning journal with them.



Teaching your child to read



Phonics!

During the Autumn term, there will be a meeting explaining our phonics scheme in more detail and to help you support your child further at home.

Book Bag

Your child will be given their book bag in September.

Reading

Your child will be assessed and given a phonetically decodable book. More information about this will be explained at the reading meeting in the Autumn term.



Parent helpers/ volunteers

- We actively encourage your support in school.
- If you would like to volunteer as a parent/ carer reader or help out on school trips please see the school office for a DBS check.





Treasure boxes - *What makes me special?*

Some homework for you over the summer!



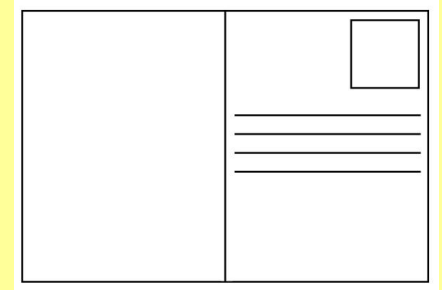
Please send your child's box in on the first day of the Autumn term!

We would like you to save a box or shoe box and ask your child to fill it with lots of things that are special to them (not too precious though please! These boxes stay in school for the first half term). Treasure boxes are a great way for us to get to know your child more! It also provides some comfort for your child if they are feeling a bit wobbly, particularly during the first few days.

You may want to pack photographs, drawings, toys, medals, ballet shoes etc! The choice is yours!



Postcards



- You will hopefully have found a blank postcard within your welcome pack.
- We would like you to write your home or summer holiday address and affix a stamp ready to be returned to us on or before Wednesday 6th July 2022.
- One of the Early Years team will then write a special message for your child and post it over the summer holidays.
- This is a brilliant way for us to keep in touch over the holidays.



Home Visits



- Within your welcome pack you will have found an information sheet regarding our home visits.
- We have allocated everyone a home visit either in July or September. Due to tight timescales, we have had to allocate visits geographically so we will be unable to change your visit slot unless you have an exceptional circumstance.
- The home visit will normally last around 15 minutes.
- You will be visited by a couple of members of the Early Years team.
- It is a really informal visit- we spend most of it playing with your child/ren and answering any questions you may have.
- A valuable opportunity for us to meet you and your child/ren in a familiar environment.
- You will notice you have a yellow balloon within your welcome packs. Please hang this outside of your home on the day of your visit so we can find your address easily.





FOSS



FOSS
www.friendsOfsummerleaschool.co.uk

