



WEST SUSSEX COUNTY COUNCIL
SUMMERLEA C.P. SCHOOL

Windsor Drive, Rustington
West Sussex, BN16 3SW
Executive Headteacher: Ms M Smailes
Tel: (01903) 856783
Email: office@summerleaschool.co.uk



'Growing thoughtful learners and independent thinkers'

Friday, 27 January 2023

Dear Parents and Carers,

It just doesn't seem possible that we are fast approaching the end of January! I think we are all looking forward to longer days and taking pleasure from the bulbs pushing their way through the frozen soil. Speaking of bulbs, we would like to thank Mrs Hills and her pupil helpers who have planted the daffodil bulbs that have been donated by the Parish Council. We look forward to seeing those in the coming weeks.

New Headteacher appointment

We are delighted to inform you that this week we successfully appointed a new Headteacher for Summerlea. We are excited about the appointment and can't wait to share further information with parents. Once we have completed the final paperwork we will let you know their name and further information including their start date. Meanwhile Mrs Smailes will continue as Executive Headteacher ensuring a smooth transition for staff, children and parents.

Strike Day – School Open

A reminder that the school will be open as usual on Wednesday 1st February. Further strike days are planned for the 2nd, 15th and 16th March and we will let you know via Parentmail the week before each of these dates whether the school will be open, to enable you to plan childcare if required.

School Pupil Council Update

The school pupil council are currently focused on improving our school environment by looking at ways to reduce litter. They are working hard to encourage everyone to take responsibility and understand the impact that we can all have on the environment.

Some Sad News

We are very sorry to say that our beautiful Pets as Therapy dog, Nanna, sadly passed away last week. We know that Nanna put a smile on the faces of everyone who met her and that she will be very much missed by us here at Summerlea. We have passed on our condolences to her owner Gaynor.

Time to Dance 2023

Fancy a night out? Want to cheer on our amazing dancers?

On Thursday 23rd March, Summerlea Dance Squad will be returning to Time to Dance for another year to perform and we would love as many of you as possible supporting and cheering us on!

Tickets go on sale on Tuesday 28th February.

Tickets cost £7.50 and a group of 4 costs £25.

You will have to book them through Worthing Pavilion Box Office: 01903 206206.



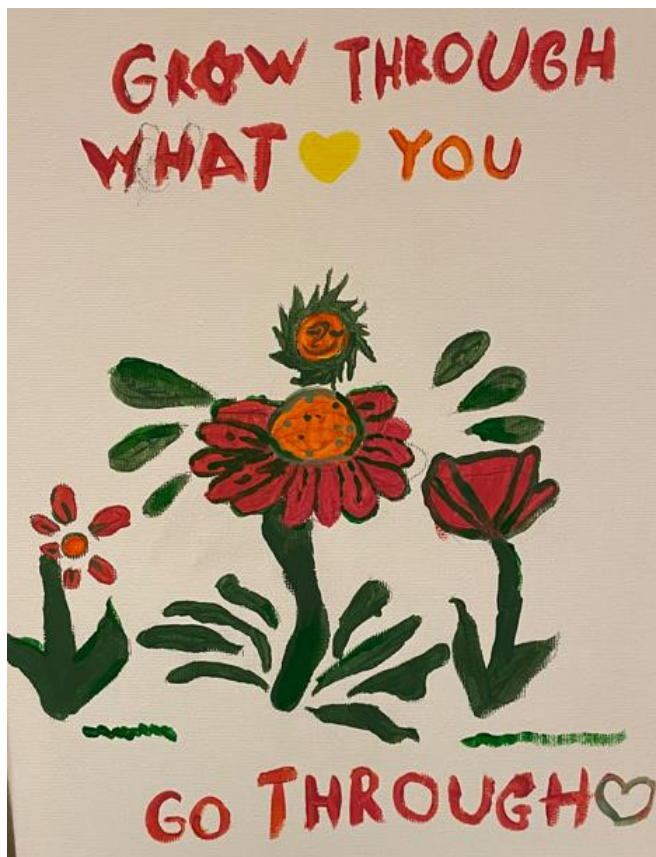


Parent Governor Vacancy

Hopefully you will have seen the communication sent out last week regarding a vacancy for a Parent Governor. We would be interested to hear from any parents/carers who would like to stand for this important and rewarding voluntary position. If you are interested, please complete the nomination form, ensuring that you obtain the signature of 2 parents/legal guardians who support your nomination. You must also include a brief election statement describing your background and how you feel you could contribute to the school as a parent governor. Please return this to school in a sealed envelope, marked for the attention of the headteacher, no later than 9am on Friday 3rd February.

We just had to share...

... this beautiful piece of art produced by one of our Yr5 pupils. We think it is a very important message too.



Parking

Please can we ask that all parents and carers park considerately. We have received a number of complaints with regards to driveways being blocked and abusive or aggressive behaviours. The cones are put out by school to alleviate cars parking dangerously around the immediate entrance to the school. When cars park on pavements it makes it even more dangerous for the pupils and other pedestrians coming into school.

We normally signpost you to report concerns to Operation Crackdown but this has now changed. We encourage you ALL to report parking concerns. Please take a look at: www.sussex.police.uk/advice/advice-and-information, 'Nuisance Parking and Abandoned Vehicles' page for more information about when and how to report concerns.



Uniform

We are proud of our uniform and want to maintain the high standards children returned to school with at the beginning of term.

We want to remind you of the following things:

- Plain white, plain grey, plain dark green or plain black socks or tights.
- Shoes – these must be suitable for school wear i.e. black and sensible.
- Plain **black** trainers are acceptable.
- Plain green / black / white shorts that are modest.
- Items with a logo other than our school logo are not acceptable.

Parent Consultations

We hope you have seen the letter that was sent home with the children on 25th January about Parent Consultations taking place after half term. Please return the slip by **Monday 30th January**.

Thank you for your continued support.

Kind regards,

A handwritten signature in cursive script that reads 'Msmailes'.

Ms Marie Smailes
Executive Headteacher



FOSS Newsletter WINTER 2022/23



F.O.S.S is an acronym for 'Friends of Summerlea School'

We are a PTA (Parent-Teacher Association) and registered charity. Together, we collaborate ideas and fundraise for the school which allows us to purchase items outside of their set curricular budget & have fun whilst fundraising!

What have we purchased recently?

Design Technology Equipment for Cookery!

Child-safe chopping knives

Chopping Mats

Mixing Bowls, Colanders & Sieves

£200 Online Pantomime for the Children

Christmas Fair December 2022....

Total Raised: £1618.05

Thank you to supporting us at the Fair with either volunteering on a stall, your generous cake & bake offerings, raffle prize contributions, chocolate and tombola contributions!

Do you use Whatsapp? Would you like to volunteer with FOSS?

We are also on FACEBOOK!

Drop us a private message/email and we can add you to the group!

You can also contact us via email, please contact Foss@summerleaschool.co.uk

Items on the list for purchasing.....

- Replacement Break-Out area fidget toys
- 'Rainy-day' box resources
- Gardening tools, plants & seeds for growing
- £300 (£100 per class) Year 6 Leavers gift
- Rolling Pins for D&T

PARENT AND CARER SURVEY

Accessing your child's mental health and
emotional wellbeing service

CLICK [HERE](#) TO TAKE
THE SURVEY



Your views and
experiences of services are
very important to us.

They help us make
informed decisions to
improve outcomes for all.

YOUNG PEOPLE'S SURVEY

Your views and experiences of
accessing mental health and
emotional wellbeing services

CLICK [HERE](#) TO TAKE
THE SURVEY



Your views and
experiences of services are
very important to us.

They help us make
informed decisions to
improve outcomes for all.

I'm so angry with my dad for taking his own life and leaving me. is this normal?

My stepsister died but I don't want to cancel our trip... is that normal?

my mum died 3 weeks ago and I still haven't cried is that normal?

I haven't been able to get back in a car since my friend died. is this normal?

is this normal?

My dad died when I was 9, I'm 13 now and miss him more than ever... is that normal?

is this normal?

I can't stop thinking about how my brother died... is this normal?

is that normal?

ABSOLUTELY.

THERE'S NO RIGHT OR WRONG WAY TO FEEL WHEN YOU'RE GRIEVING.

WE'RE HERE TO LISTEN.



winstonswish.org (3-8pm)



ask@winstonswish.org



08088 020 021

**WINSTON'S
WISH WW**

Giving hope to grieving children

PREMIER CAMPS NEAR YOU

Worthing

*West Park
Primary
School
BN12 4HD

*Lady of Sion
Senior School
BN11 4BL

Lancing

Sompting
Village
Primary
BN15 0BU

Storrington

Chanctonbury
Leisure Centre
RH20 4BG

Bognor Regis

Barnham
Community
Hall
PO22 0AY

All Multi Activities courses plus
West Park & Sion - Performing Arts
West Park - Gymnastics
8.30-4pm £24.95
Use online code WS20 for
20% off expires 01.02.23

*Worthing Leisure Centre,
BN12 4ET Multi Activities
www.southdownsleisure.co.uk

PLEASE BRING

A packed lunch
Plenty of water
Suitable clothing
Loads of energy!

Have a fantastic February half-term with
our multi-activity holiday camps!

These camps are a perfect blend of
activities for all ages, combining different
sports with a variety of team games.

Every day is different, with a mix of fun
activities that children may not have tried
before – from roller skating to fencing,
lacrosse to cheer.

Book now for a half-term full of fun!



**TREAT YOUR FRIENDS
TO 20% OFF...AND GET
20% OFF TOO!**

*Ts&Cs apply. Refer a Friend discount on new bookings only.



Based on over 15,000 reviews



FEBRUARY
HALF-TERM

PREMIER HOLIDAY CAMPS



Premier
Education

INSPIRING
ACTIVITY



**SCAN HERE FOR
MORE INFORMATION**

or visit premier-education.com/holiday-camps

★ Trustpilot



Based on over 15,000 reviews

RUSTINGTON MUSEUM

FREE EVENT

HALF TERM ACTIVITIES

**Making Valentine
Decorations**

February 14th, 15th & 16th

10am-12.30

No booking required



PAID PLACES ONLY £23

Early Bird Price
when booked 2
weeks in
advance!

Standard price is
£27.80 per day.



FEBRUARY HALF TERM HOLIDAY CAMP



HALF TERM 13TH - 17TH FEB

The March C of E Primary
East Preston Junior School

Steep C of E Primary
Westbourne Primary

8.30AM - 4.30PM

CONTACT US NOW

ADMIN@JC-SPORTSONLINE.COM
08009949164